

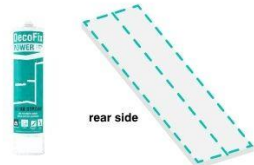
Instructions for Installation of 3D Wall Panels

Linear Wall Panels

Using a length < 200cm / 78 3/4" (max. full length)

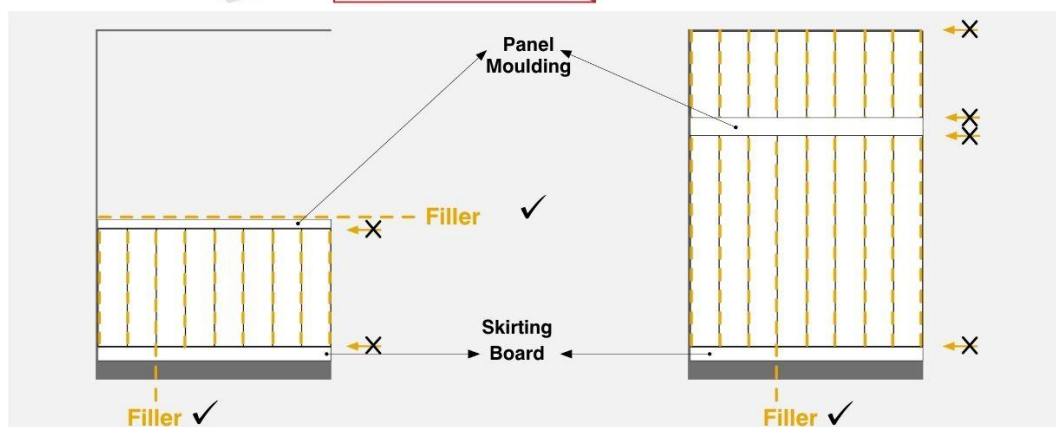
Using horizontally positioned (intermediate) profile

1 ADHESIVES + FILLER



Use Filler for all vertical seams and for the top of a horizontal frame in the case of low panelling

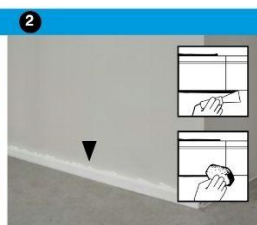
Do not apply Filler in expansion gaps



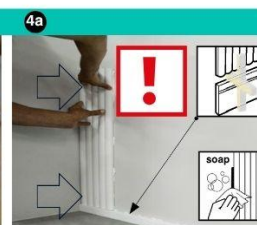
2 INSTALLATION



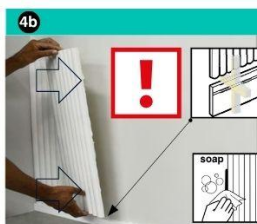
Install a skirting board



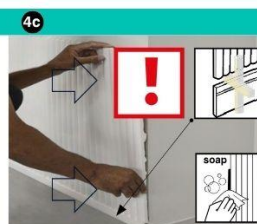
Apply Fix Power all around and on the length of the middle rib



Push firmly and remove excess glue



Provide expansion gap at a rate of 1mm/m (3/64" per 39 3/8")



Install a finishing or intermediate profile



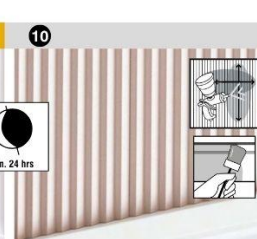
3 FINISH



Use Filler to smooth out the visible joints and all vertical seams.



Wait 15 minutes and sand gently



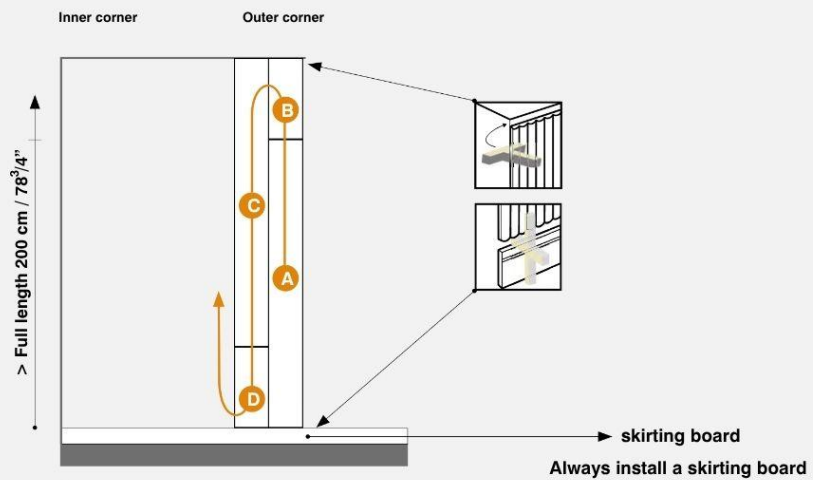
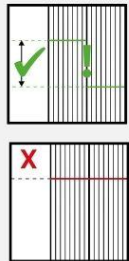
Paint the installed panels (with a spray gun)

Using a length > 200cm / 78 3/4"

Uniform wall covering



1 WORK METHOD



Provide an expansion gap of 1mm/meter ($\frac{3}{64}$ " per 39 3/8") above the skirting board (and at the ceiling)

2 ADHESIVES + FILLER



rear side



Use Fix Ultra for all
SHORT joints between
the panels



Use Filler for ALL joints
between the panels

Fix Ultra

Filler

Do not apply Fix Ultra and Filler in expansion gaps

Fix Ultra

Filler

skirting
board

Filler

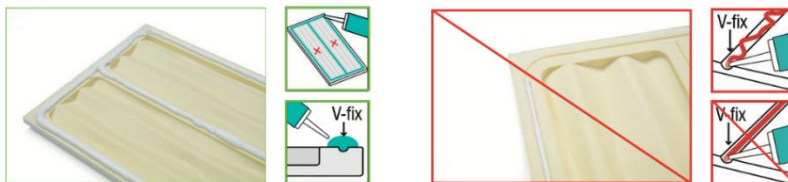
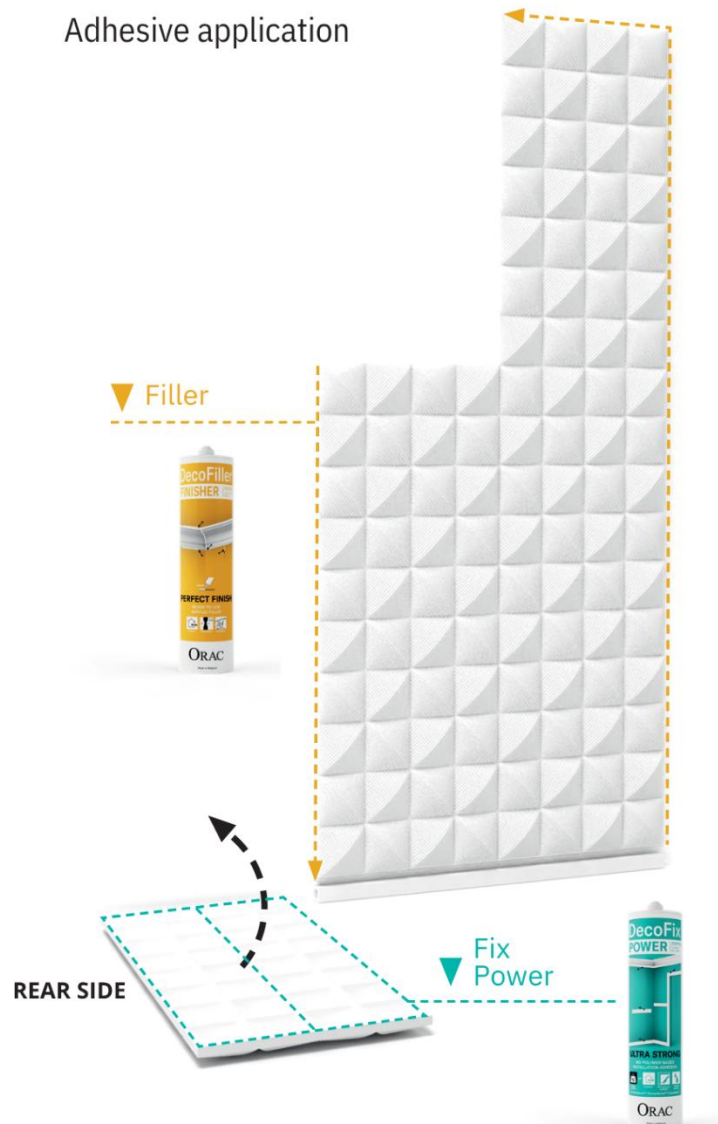
length > 200cm / 78 3/4"
Uniform wall covering

4 INSTALLATION

<p>1</p> <p>Install a skirting board</p>	<p>2</p>	<p>3</p> <p>Apply DecoFix Power all around and on the length of the middle rib</p>	<p>4a</p> <p>Push firmly and remove excess glue</p>
<p>4b</p> <p>repeat</p>	<p>4c</p> <p>Measure remaining length</p>	<p>5</p> <p>Mark on the panel</p>	<p>6</p> <p>Saw to size mechanically or manually</p>
<p>7</p> <p>Apply Fix Ultra to the short seam of the panel as close to the wallside as possible</p>	<p>8</p> <p>Place the shortened piece above the first panel</p>	<p>9</p> <p>Push firmly</p>	<p>10</p> <p>Remove excess Fix Ultra</p>

Patterned Wall Panels

Adhesive application



Use Fix Power in abundance on the glue lines (V-fix) provided

CHOOSE THE DESIGN

1a

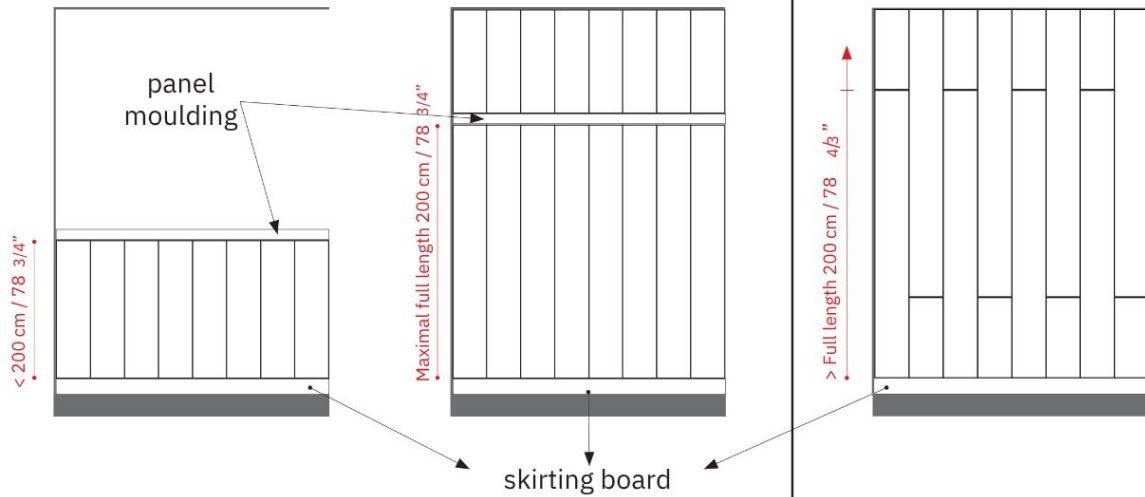
Low panelling

1b

Using intermediate profile

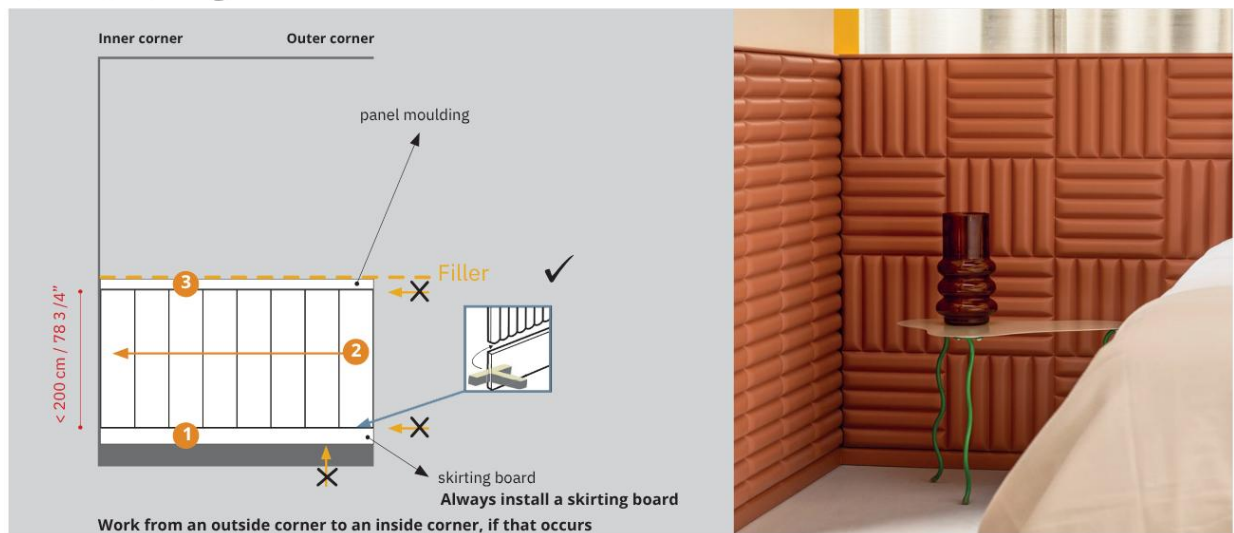
2

Uniform wall covering



1a length \leq 200cm / 78 3/4" (max. full length)

Low Panelling



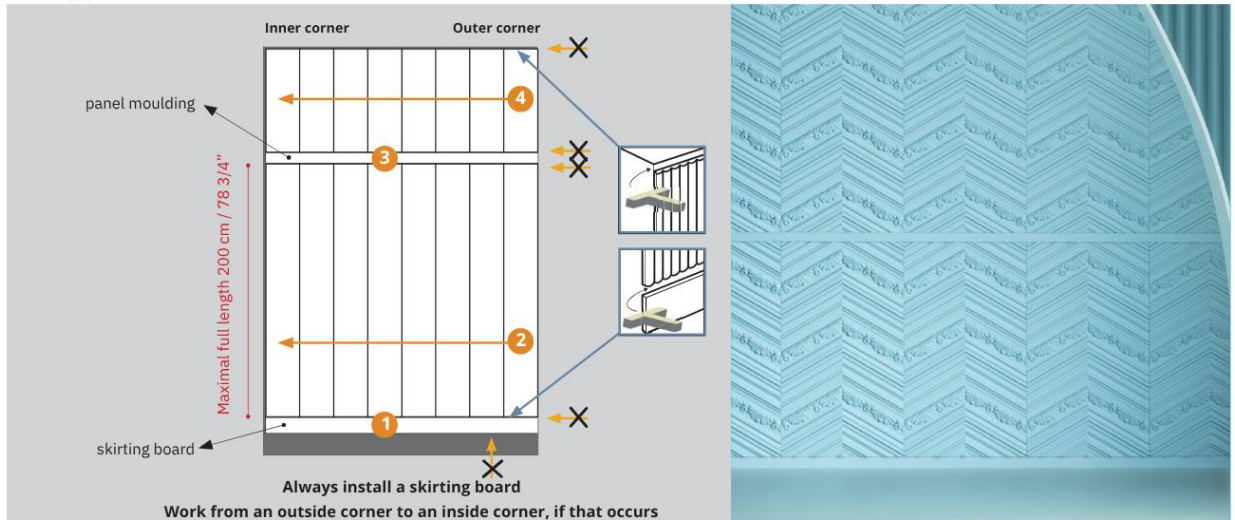
Provide an expansion gap of 1mm/meter (3/64" per 39 3/8") above the skirting board (and at the ceiling)



Use Filler for the top of a horizontal frame in the case of low panelling.
Do not apply Filler in expansion gaps
Finish the installation all around with Filler



Using Intermediate Profile



Provide an expansion gap of 1mm/meter (3/64" per 39 3/8") above the skirting board (and at the ceiling)



Use Filler for the top of a horizontal frame in the case of low panelling
Do not apply Filler in expansion gaps
Finish the installation all around with Filler



Do not apply Fix Ultra

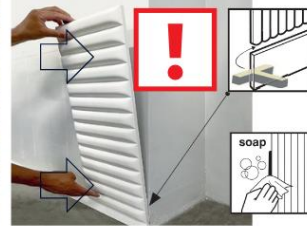
INSTALLATION



Install a skirting board



Apply Fix Power all around and on the length of the middle rib



Push firmly and remove excess glue



Position the panels

Provide expansion gap at a ratio 1mm/m (3/64" per 39 3/8") etc.



Install a finishing or intermediate profile



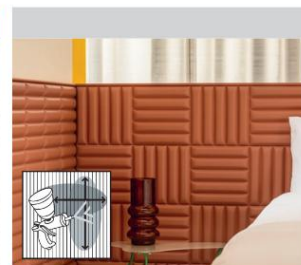
If desired, place a row of panels above the intermediate profile



FINISH



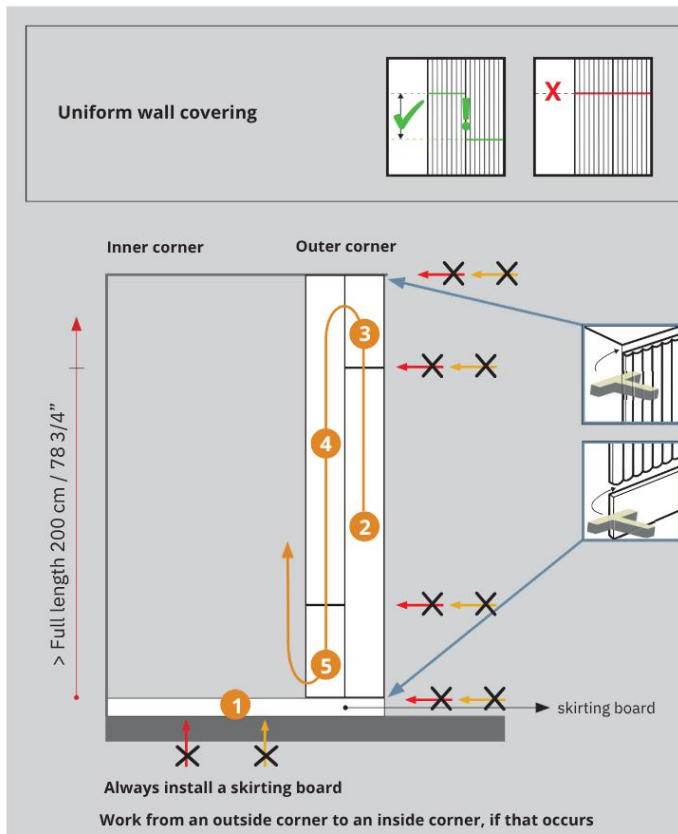
Use filler for the top of a horizontal frame in case of low panelling



Paint the installed panels (with a spray gun)

2 length > 200cm / 78 3/4"

WORK METHOD



Provide an expansion gap of 1mm/meter (3/64" per 39 3/8") above the skirting board and at the ceiling



Do not apply Filler

Provide expansion gap at a ratio 1mm/m (3/64" per 39 3/8")

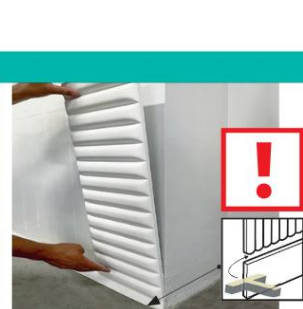
INSTALLATION



Install a skirting board



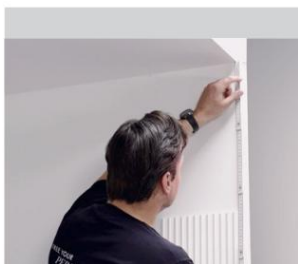
Apply Fix Power all around and on the length of the middle rib



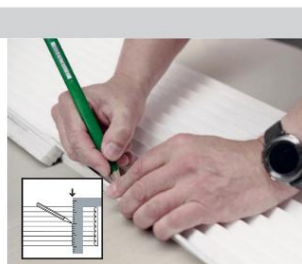
Start by placing at the bottom (at an outer corner), push firmly and remove excess Fix Power



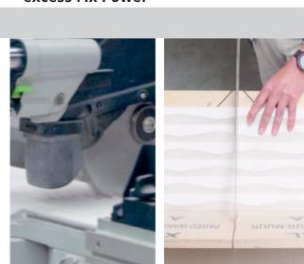
Push firmly and remove excess glue



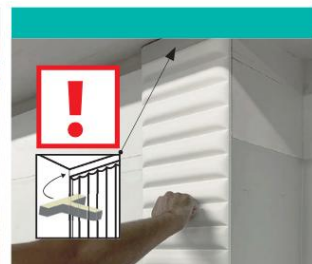
Measure remaining length



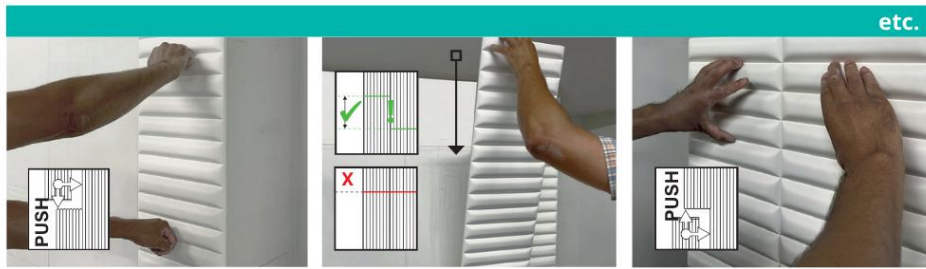
Mark on the panel



Cut to size



Place the shortened piece above the first panel

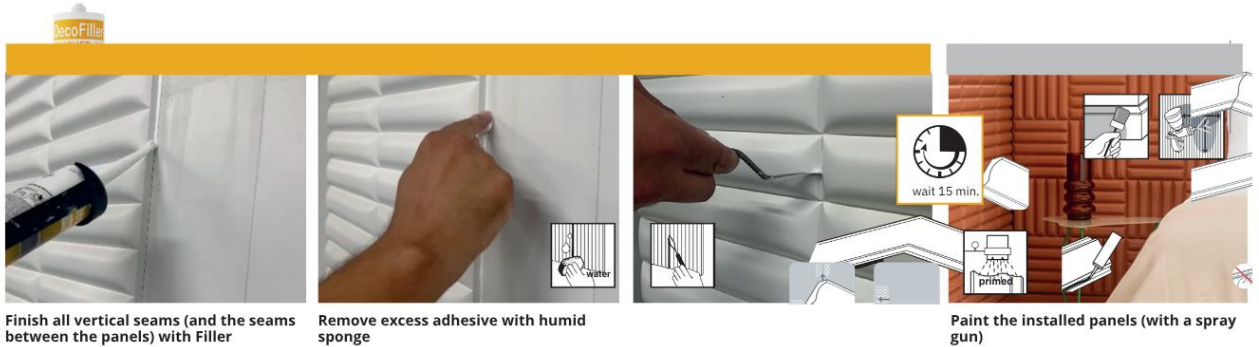


Press and position the panels closely and carefully together

Start second row by placing panels from ceiling down

Finish the full height of the 2nd row

FINISH



Finish all vertical seams (and the seams between the panels) with Filler

Remove excess adhesive with humid sponge

Paint the installed panels (with a spray gun)

Painting suggestions

WHAT IS THE BEST WAY TO PAINT THE WALL PANELS? Use a spray gun to apply the paint to a horizontal panel. Do this lengthwise, first at a 45° angle from the left, and then at a 45° angle from the right. This ensures even distribution of the paint. Check that everything is covered.

