

# Instructions for Installation of Dado Rails & Panel Mouldings



These products are considerably easier to install than traditional materials. The polymer material is more lightweight than plaster or wood, is less prone to damage, cuts more easily and creates less dust and mess. They are installed using adhesive and are pre-primed, so they only need one coat of paint.

The tools you'll need:

- **Pencil** – For marking measurements and wall edges.
- **Tape Measure** – To measure wall lengths and mouldings accurately.
- **Mitre box or Mitre Saw** – For making precise angled cuts.
- **Fine-tooth saw** – To cut the moulding cleanly.
- **Adhesive** – For securing the moulding to the wall.
- **Joint adhesive** – For bonding pieces of moulding together at joins.
- **Painter's knife or filling knife** – For applying filler and cleaning up excess adhesive.
- **Soapy water and cloth/sponge** – To clean excess adhesive before it sets.
- **Sandpaper or sanding block** – For smoothing filled joints.
- **Filler** – To fill visible joints and gaps.
- **Protective sheet or dust sheet** – To protect floors and furniture during installation.
- **Caulking Gun** – To apply the adhesive and filler.
- **Hammer & Finishing Nails** (optional) – For extra security when installing.

**Adhesives:** We strongly recommend that you use our adhesives. They have been developed specifically for use with the range. Other bonding agents may not be chemically compatible with the product range and may provide inadequate adhesion or fusion. Our Premium Strength Adhesive will be suitable for installing any profile, but for extra peace of mind, you can use finishing nails to keep the profile in place once it sets.

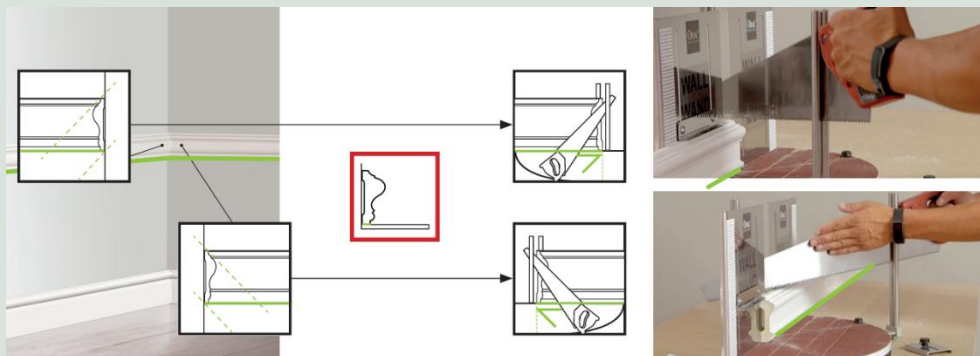
## Dado Rails & Panel Mouldings

### 1. Preparation

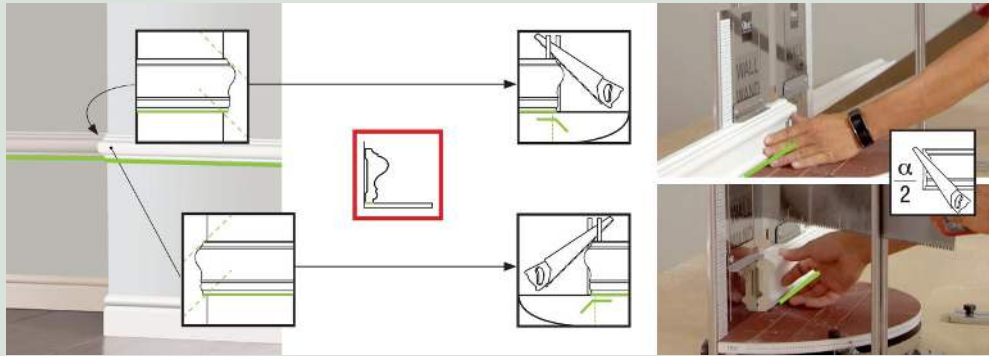
- Check the walls are clean and dry and are free from any grease or dust. Lightly sand or wash the surface if needed.
- Use a pencil to mark the height of the dado rail at various points along the wall. This helps to ensure a uniform height across the wall.
- Using a spirit level or chalk line, draw a level guide line across the wall.

### 2. Mitres

#### Inside Corners (Internal):



### Outside Corners (External):



### Panel Mouldings:



## 3. Installation

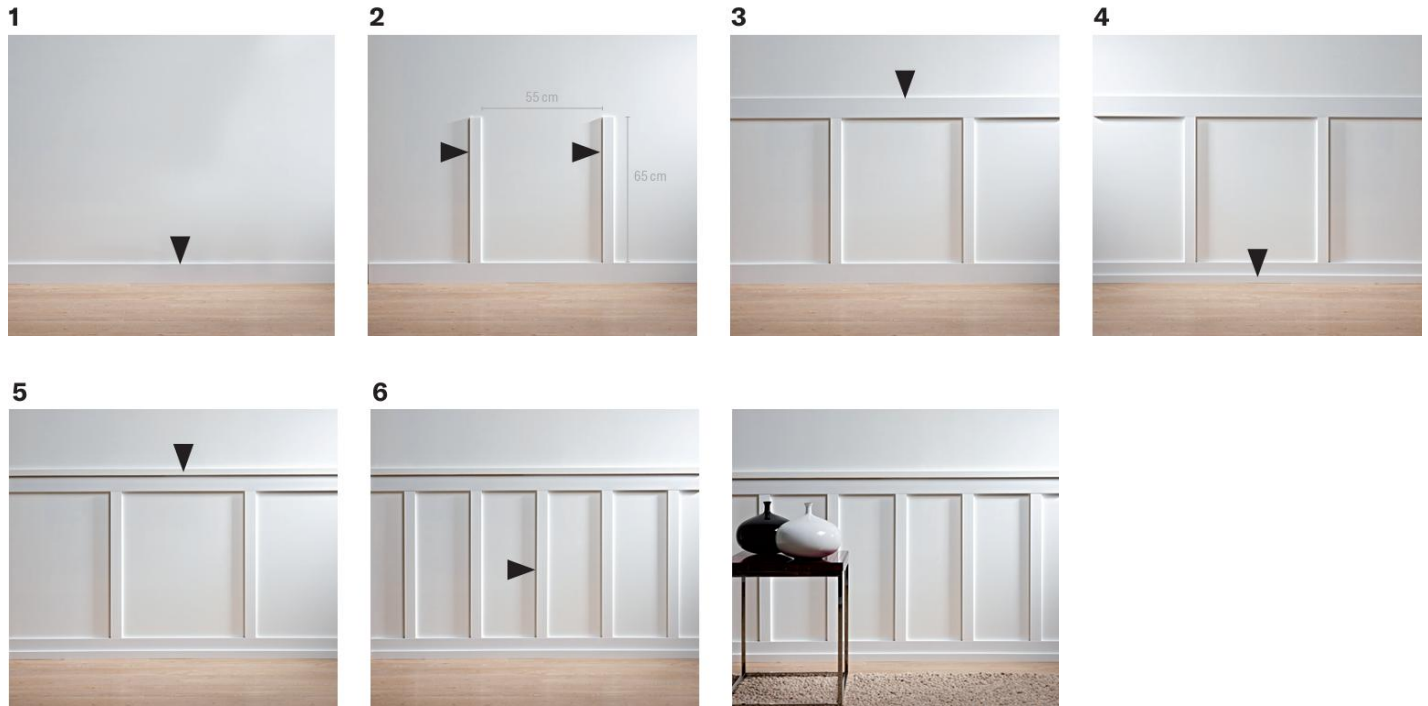
- Apply adhesive along the full length of the rear edges of the profile.
- Push firmly onto the wall, using your guide line for reference.
- Clean away any excess adhesive with a damp sponge and soap.
- Use the Fix Ultra adhesive with every join.
- Press the moulding firmly into position so that adhesive slightly spills out — do not press too hard to avoid removing all adhesive from the join.
- Remember the strength is in the adhesive so maintain a small gap at joins for flexibility and avoid too much glue being pushed out.
- Wipe off excess adhesive with soapy water and a scraper within 10 minutes.

## 4. Finishing

- Use filler to smooth over any visible joins
- Wait at least 24 hours before painting.

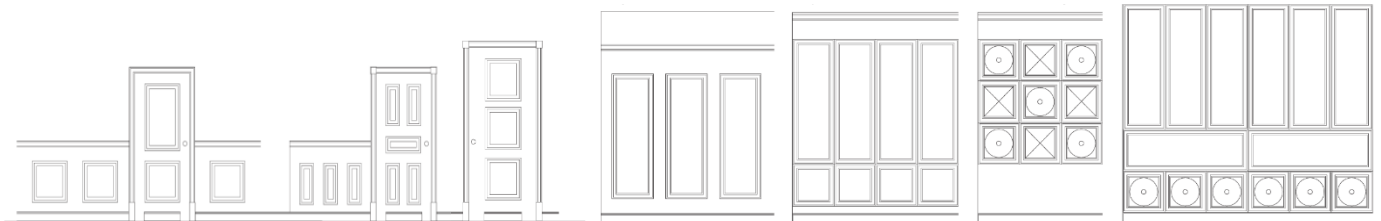
**Note:** All mouldings are pre-primed. Final painting is necessary for UV resistance.

## **Wainscoting / Shaker Style Panels**



*For installation and finishing, see Dado Rail & Panel Moulding guide above.*

## **Raised Panels**



### **1. Preparation**

- Check the walls are clean and dry and are free from any grease or dust. Lightly sand or wash the surface if needed.
- Use a pencil to mark the height of the panels. This helps to ensure a uniform height across the wall.
- Using a spirit level or chalk line, draw a level guide line across the wall.

### **2. Installation**

- Ensure all contact points on the back are covered with a bead of adhesive.
- Press firmly onto the wall and remove any excess adhesive with a soap solution.

### **3. Finishing**

- Wait 24hrs and fill in all edges with the Filler. Use a damp sponge to smooth out the filler.
- After 15 minutes the panels will be ready to be painted.